

**JUNIOR RESERVE OFFICERS TRAINING  
CORPS**

**INTERSERVICE CROSS-INDEX DRILL MANUAL**

## **FOREWORD**

**The purpose of this manual is to present guidance for JROTC instructors, cadets, drill meet judges and other interested parties in interpreting differences in military drill as taught in the four service organizations.**

**Military drill is taught in all service JROTCs for the same basic purposes:**

- a. To aid in disciplinary training by instilling habits of precision and automatic response to orders.**
- b. To increase the confidence of leaders through the exercise of command.**
- c. To build morale by developing team spirit and unit pride.**

**Military drill as taught in the four service JROTCs is basically the same. To the untrained eye the various differences in the execution of movements and the delivery of commands would be virtually undetectable. To each individual JROTC however, it is highly important that each maneuver, each movement and each command is executed exactly as prescribed in the various service drill manuals. This attention to detail is precisely what is expected of each cadet in training.**

**As JROTC Units throughout the country interact together in drill meets, parades, community and service activities, the differences in their methods of military drill become more evident. Area, regional and national drill meets that include all four service JROTCs are becoming commonplace. With this in mind, this reference is published to index the differences in the various drill manuals for use by judges and instructors in preparing to evaluate or observe JROTC units when engaging in drill or military activity in conjunction with other service units.**

**This reference covers only the commonplace military drill as taught in the various JROTC units and does not attempt to address all of the traditional military procedures contained in the four services drill manuals. For example; where and when to salute seniors, when covered and uncovered, would not be included in this manual, whereas, the differences in how to execute the command to stand at ease would be addressed.**

**The drill reference for Army units is FM22-5, Drill and Ceremonies, for the Navy and Marine Corps, The Marine Corps Drill and Ceremonies Manual, NAVMC 2691 and the Navy JROTC Units utilize the Cadet Field Manual, NAVEDTRA 37116-d, which contains extracts from the Marine Corps Drill and**

**Ceremonies Manual.** The Air Force reference is **AFM 36-2203, Personnel Drill and Ceremonies.**

For ease in distinguishing a preparatory command from a command of execution, the commands of execution are printed in BOLD CAP letters and preparatory commands are printed in *Bold Italic* letters. Reference to positions and movements are capitalized.

## Chapter 1

### **INDIVIDUAL DRILL**

This section contains differences in stationary movements in the various manuals. If the movement or position is not mentioned, it may be assumed that they are the same or the description of the position is basically the same in all manuals.

#### **PART I – STATIONARY MOVEMENTS**

##### **PARADE REST**

This command is executed with the same command; *Parade* REST, in one count, in all services. The following differences apply:

**Navy, Marine Corps and Air Force –** On the command of execution, the left foot is moved smartly to the left *12 inches.*

**Army –** On the command of execution, the left foot is moved smartly to the left *10 inches.*

**Navy, Marine Corps and Air Force –** The only authorized command from this position is that of; ATTENTION.

**Army–***Stand at*, EASE, AT EASE, and REST may be executed from this position.

##### **AT EASE**

This command is executed in one count and the same command; AT EASE, in all four services. The only differences are in commands allowed from this position.

**Navy, Marine Corps and Air Force –** The only command that can be given from this position is ATTENTION.

Army – The command REST may be given from this position.

### STAND AT EASE

Navy, Marine Corps and Air Force – This command is not authorized.

Army - On the command of execution, *Stand at*, EASE, *Parade* REST is executed and the head and eyes are turned directly toward the person in charge. AT EASE or REST may be executed from this position.

### HAND SALUTE

The movement of an unarmed hand salute is rendered the same in all services. The differences are in the commands given and when cadets are covered or not covered.

Navy, Marine Corps, and Air Force – The commands for executing and recovering are: *Hand*, SALUTE and *Ready* TWO. The Commands *Present*, ARMS, and *Order*, ARMS, may be used. Cadets do not salute when uncovered. In the Air Force, this command is used for training purposes only.

Army – The command *Hand*, SALUTE, and *Ready*, TWO are not used. The command is *Present*, ARMS. To recover, the command is *Order* ARMS. Cadets may salute uncovered when appropriate. The uncovered salute is rendered as in other hand salutes and by placing the hand so that the tip of the right forefinger touches the forehead near and slightly to the right of the right eyebrow.

## PART II – STEPS AND MARCHING

### DOUBLE TIME

The Movements for DOUBLE TIME are the same in all services, at a cadence of 180 steps per minute. The difference in execution is in the length of the step.

Navy and Marine Corps – The movement is executed with 36-inch steps.

Army and Air Force – The movement is executed with 30-inch steps.

### FORWARD MARCH

The execution of *Forward*, MARCH is the same in all services. There is a difference in the manner of swinging the arms and the length of the step.

**Navy , Marine Corps, and Air Force** – The arms swing in their natural arcs, six inches straight forward and three inches to the rear.

**Army** - The arms swing in a natural motion, approximately 9 inches straight to the front and six inches straight to the rear of the trouser seams.

Navy, Marine Corps and Army Units march at a 30-inch step. The Air Force specifies a 24-inch step (measured from heel to heel).

### **MARCHING IN PLACE**

Marching in place or *Mark Time*, MARCH, is executed the same in all services with the exception of the distance to raise the foot off the marching surface.

**Navy , Marine Corps, and Air Force** – Raise and lower the feet approximately 4 inches above the deck.

**Army** - Raise each foot (alternately) 2 inches off the marching surface.

### **SIDE STEP (LEFT OR RIGHT STEP)**

The command and execution for the movements, *Right (left) step*, MARCH, are the same in all services. Differences between the services are in the length of the step.

**Navy, Marine Corps and Air Force** - At the command MARCH, move the right (left) foot 12 inches to the right (left), then place the left (right) foot beside the right (left) foot.

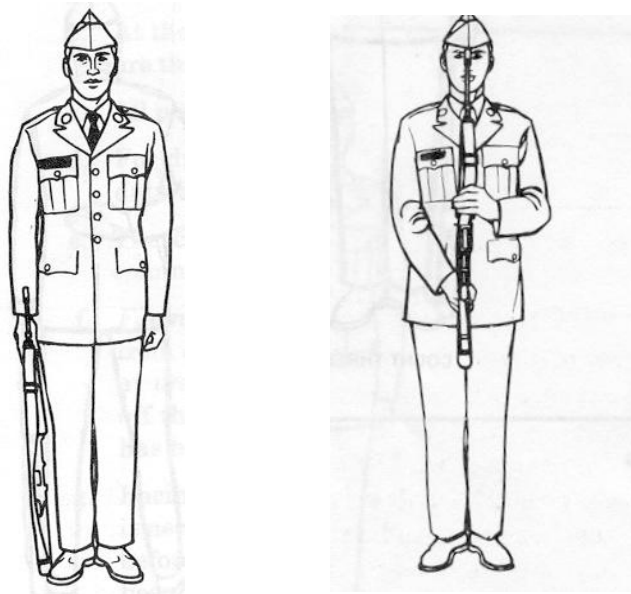
**Army** - On the command of execution MARCH, place the right (left) foot 15 inches to the right (left) and then move the left (right) foot along side the right (left) foot as in the position of attention.

**PART III – INDIVIDUAL DRILL WITH WEAPONS** – Weapons used by Army, and Navy Junior Units are limited to the Mark 5 (Springfield) and the Mark 6, (M-1) Demilitarized rifles. Marine Corps Junior Units are issued the M-14 rifle. Detailed positions of the hands and fingers on the rifle while performing the manual of arms are not discussed. FM-22-5 illustrates the Manual of Arms using the M-16, and M14 rifles, which are not issued to JROTC Units. The differences addressed are limited to the major movements of the rifle, such as, *order, port, right and left shoulder, present* and *inspection* ARMS. Drill with weapons is not addressed in the Air Force Manual (AFMAN 36-2203).

## **PRESENT ARMS**

This position is the same for all services. The Command for execution of the movement is the same, that being, *Present, ARMS*. The differences are in the counts to execute the movement and the movements allowed from the position.

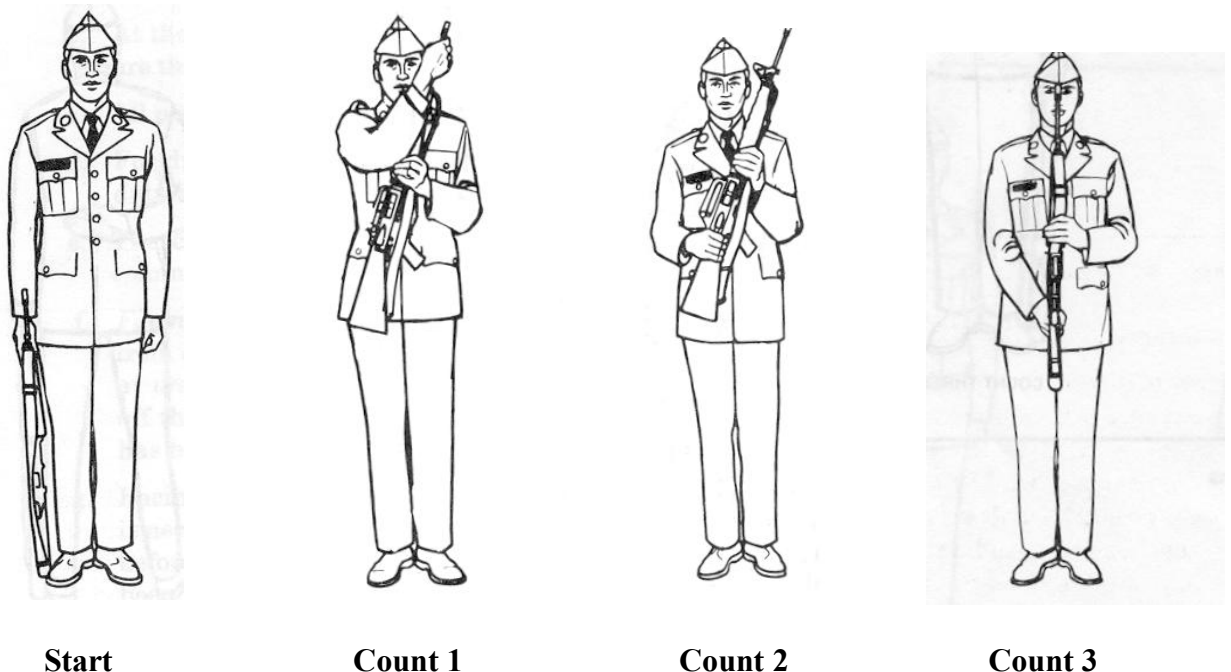
**Navy and Marine Corps** – The movement can only be executed from *Order ARMS* or *Port ARMS* and is executed in two counts as shown in figure 1 and 2 below. The only movement allowed from this position is a return to *Order ARMS*.



**FIGURE 1**

In the Navy and Marine Corps the movement from *Order ARMS* to *Present ARMS* is in two counts. (1) The rifle is raised to a position 4 inches in front of the center of the body, sling away from the body, barrel straight up. At the same time the balance point is grasped with the left hand, thumb on the lower hand guard. Fingers are joined, and the sling included in the grip. The stacking swivel is level with the eyes. (2) The small of the stock is grasped with the right hand, fingers extended and joined. Elbows against the sides. The Navy and Marine Corps movement does **NOT** assume *Port ARMS* en route to *Present ARMS*.

**Army -** Movements to Present arms may be made from any position, but assumes *Port ARMS* en route to *Present ARMS*. Figure 2 below illustrates the movement from *Order* to *Present ARMS*



**FIGURE 2**

### **INSPECTION ARMS**

The movement to *Inspection ARMS* varies by service and by the model rifle being used. As a general rule, all JROTC units use demilitarized rifles on which the bolts or operating handles do not open. For this reason the movement is made without operating the bolt or handle. The movement is made in four counts from *Order ARMS*. Counts 1 and 2, Come to *Port ARMS*. Count 3, drop the head and look at the cartridge chamber of the rifle. Count 4, raise the head smartly to the position of attention.

## **Chapter 2**

### **SQUAD AND PLATOON DRILL**

This section contains differences in drill movements performed by cadets while performing as squad and platoon members. All individual movements described in chapter 1 are executed while performing as a squad or platoon member.

### **OPEN RANKS AND CLOSING RANKS**

The movements of squads and individuals when opening and closing ranks are identical in all services in regard to the steps taken forward or backward by the various squad members. The differences in this movement are in taking interval after the squads open ranks with the prescribed number of steps forward or backward.

Navy, Marine Corps and Air Force - As each successive squad takes the prescribed number of steps forward or backward and halts, the individuals execute dress right at normal interval. The platoon commander verifies as for dress right. After verifying the alignment of the rear rank, he faces to the right as in marching, moves three paces beyond the front rank, faces to the left and commands *Ready*, FRONT; COVER.

Army - The movements are executed the same as the Navy and Marine Corps, but after executing the prescribed steps, the individuals do NOT raise their arms. If the platoon leader wants exact interval or alignment, he commands, *At close interval* (*At double interval*) *Dress Right*, DRESS.

## MARCHING MOVEMENTS AND COMMANDS

Changing direction of columns, flanking movements, and marching to the rear are all accomplished the same in all services. There are differences in the actual commands given to execute the movements.

### MARCHING TO THE REAR

Navy, Marine Corps and Air Force - The command to march in the opposite direction is given as, *To The Rear*, MARCH.

Army - The command is given as, *Rear*, MARCH.

### FLANKING MOVEMENTS

Navy and Marine Corps – The command to march to the right (left) flank is, *By The Right (left) Flank*, MARCH.

Army and Air Force – The command to march to the right (left) flank is, *Right (left) Flank*, MARCH.



### **COUNTING OFF**

The command is executed the same in all services. There is a difference in giving the command when in column.

**Navy and Marine Corps** – When in line, the command is *Count, OFF*. When in column, the command is, *From Front To Rear, count OFF*.

**Army and Air Force** – When in line or in column, the command is, *Count, OFF*.

### **COUNTER COLUMN**

Counter column is a movement used when space is limited and the platoon leader wishes to march the cadets in the opposite direction (reverse) with squad leaders at the head of their squads. This movement is performed by Army and Air Force units, but is not a legal movement by Navy and Marine Corps units. The command to perform this movement is, *Counter Column, MARCH*. The movement is executed as shown in figure 3.

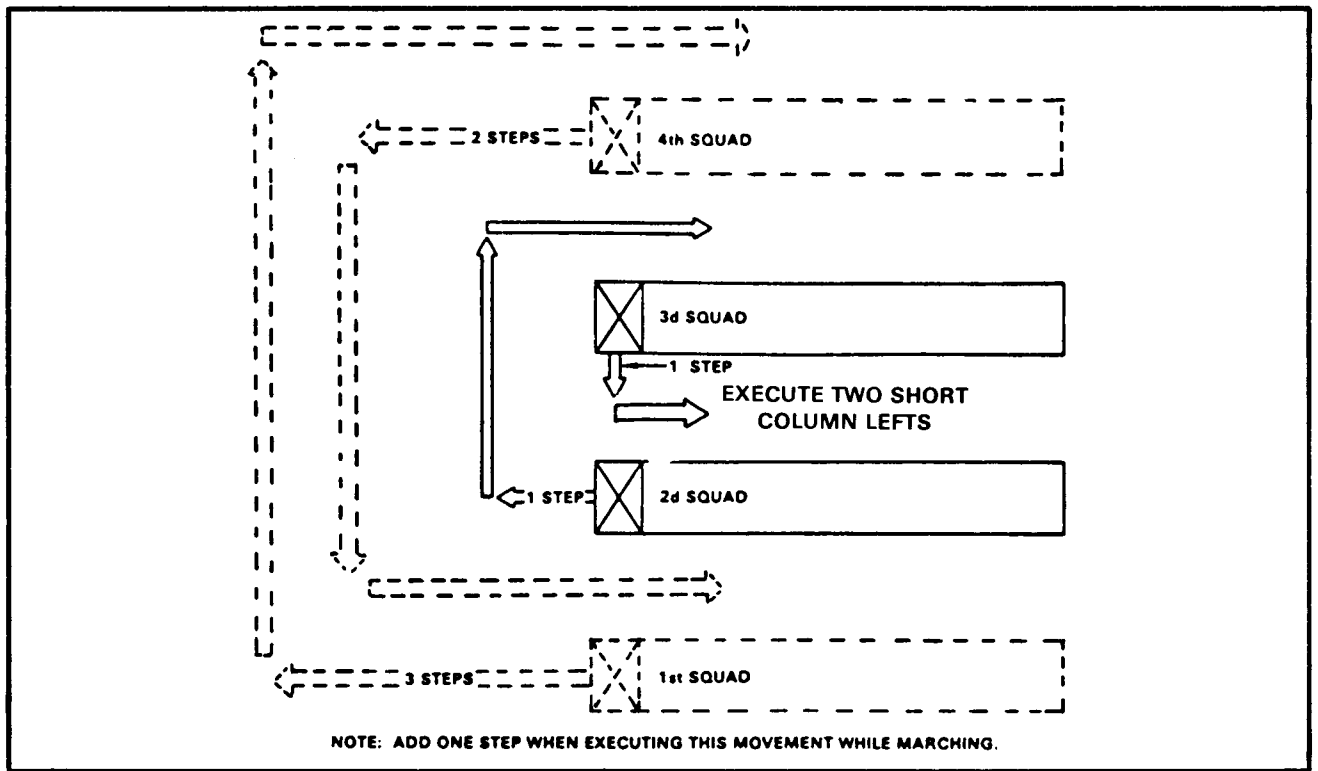


Figure 3

Execution of the COUNTER COLUMN by Army and Air Force JROTC units.

## Chapter 3

### MANUAL OF THE GUIDON

The Guidon is normally a company, troop or unit identification flag. In JROTC units it is often carried by the guide in platoon formations or when performing in drill competitions. The Navy and Marine Corps consider the guidon bearer to be armed and the individual does not carry a weapon. In the Army the Guidon bearer may also be armed with a rifle at sling arms. Air Force Guidons are unarmed.

### PARADE REST

The movement is executed in the same manner in all services except for the beginning of the movement on the preparatory command.

Navy, Marine Corps and Air Force – The command for the movement is *Parade, REST*, and is executed in one count on the command of execution. As stated in part 1, the feet are placed 12 inches apart.

Army - The command is *Parade, REST*, on the preparatory command *Parade*, the right hand is moved up the staff until the right arm is horizontal. On the command of execution, *REST*, the remainder of the movement is completed. Figure 4, below shows the position assumed on the preparatory command (1) and then on the command of execution (2). As stated in part 1, the feet are 10 inches apart.

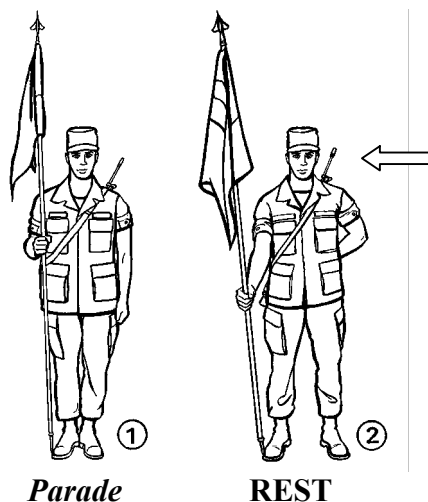


Figure 4

**Note:** Navy, Marine Corps and Air Force units do not carry rifles when bearing the Guidon.

## CARRY GUIDON

The positions of Carry Guidon and Order Guidon are the same in all services. The execution of the movement from Order to Carry Guidon is different.

**Navy, Marine Corps and Air Force** - Executed on a preparatory command, such as *Forward*, which requires moving to a new position. On the preparatory command, place the left hand on the staff 2 inches above the right. Loosen the grip of the right hand. Pull the staff up with the left hand until the ferrule is 6 inches above the deck. Hold the staff straight with the right hand. Move the left hand back smartly to the side.

**Army**- Executed on a preparatory command, such as *Forward*. On the preparatory command grasp the staff with the right hand and raise it 6 inches off the marching surface. At the same time, reach across the body, (forearm horizontal) and grasp the staff with the left hand. Hold the staff in position while sliding the right hand down 6 inches, regrasping the staff. On the command of execution, return the left hand smartly to the side.

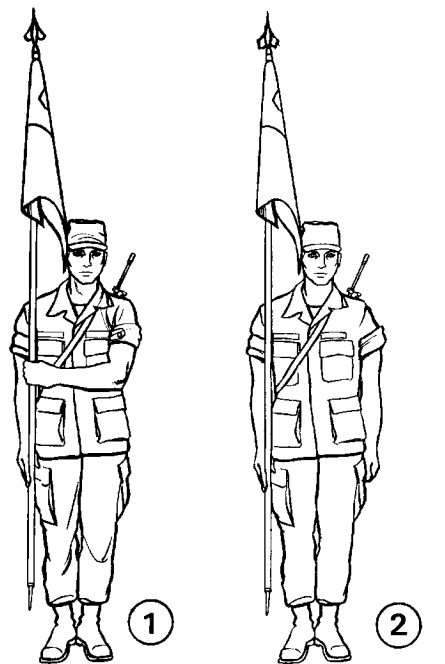


Figure 5

Figure 5 shows the Army method of moving from Order Guidon to Carry Guidon. The Navy method is similar but differs slightly.

### **PRESENT GUIDON**

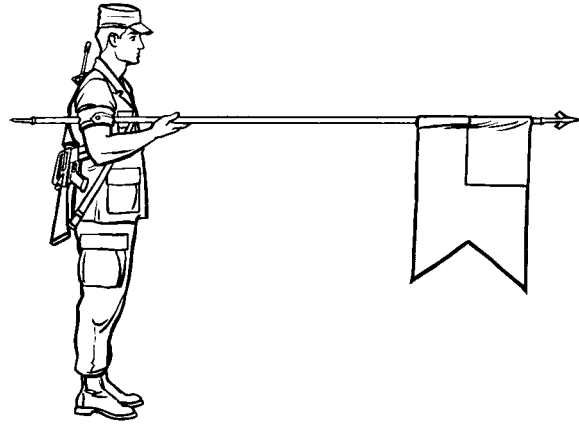


Figure 6

Figure 6 shows the position of Present Guidon. This position is the same in all services. There are differences in the movements from Order Guidon to Present Guidon and from Carry Guidon to Present Guidon.

**Navy and Marine Corps** – On the command *Present ARMS* or *Eyes RIGHT*, the Guidon is lowered in one count until the staff is in the position shown in figure 6. The right hand is 6 inches lower on the staff at Carry than at Order, therefore the ferrule will extend farther to the rear when at Present Guidon from Order than it will from Present Guidon from Carry.

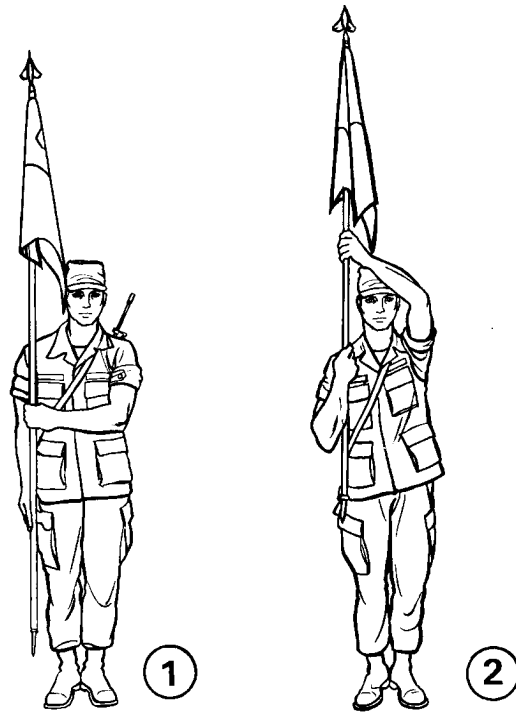


Figure 7

**Army and Air Force** – On the preparatory command for *Present ARMS* or *Eyes RIGHT*, Raised Guidon is executed from Order or Carry Guidon before coming to Present Guidon. This is done as shown in figure 7, (1) and (2) above. The guidon is raised vertically by grasping the staff with the right hand while simultaneously moving the left hand across the body to guide the guidon. The guidon is raised until the right hand is on line with the right shoulder. The right elbow is held into the side. The guidon is held in this position until the command of execution is given. On the command of execution, the guidon is lowered to the front using the right hand, keeping the left hand in the same position as Raised Guidon until the guidon is in the horizontal position resting under the armpit. As soon as the staff is horizontal, return the left hand sharply to the left side. (Figure 6).

### **READY GUIDON**

This command is used by the Navy and Marine Corps to signal the execution of commands where hearing verbal commands is difficult. An example would be when in a very large formation or when following closely behind a band. This command is not used in the Army or Air Force.



**Figure 8**

**Navy and Marine Corps** – On the preparatory command, such as *Forward*, the guidon is raised vertically over the head until the right hand is in line with the right shoulder, and the right elbow touching the side. Simultaneously move the left hand across the body and grasp the staff at a point directly in front of the right hip, left forearm against the body. The guidon is held in this position, ( figure 8), until the command of execution is given, such as MARCH, then lowered to the carry, the left hand is returned smartly to the side.

**Army and Air Force** – This command is not used.

## Chapter 4

### COLOR GUARD

Differences in the movements of the color guard in the various services will be limited to the manual of the Color Guard and the required marching movements and commands. Movements discussed will be for a four-person color guard with the National Colors and a unit or organizational flag and two color guards (rifle bearers in the Navy, Marine Corps and Army, rifle or revolver bearers in the Air Force). The four-person Color Guard is the standard organization that usually performs in JROTC drill competitions. Procedures for Casing and Uncasing the Colors as performed in Army Drill Competitions are outlined as well.

#### ORDER AND CARRY COLOR – ALL MEMBERS

The position of Order Color is the same in all four services. The movement to and the position of Carry Color are different.

Navy and Marine Corps - The position is the same as the Army with the exception of the left rifle bearer, this cadet executes *Left Shoulder ARMS* when moving to Carry Color. The rifle remains in this position for all marching movements while at the Carry.

Army - The left rifle bearer executes *Right Shoulder ARMS* when moving to Carry COLOR. The rifle remains in this position for all marching movements while at the Carry.

Air Force – The Color Guards may be armed with rifles or revolvers, the AFMAN 36-2203 does not address the movement of rifle bearers in the Color Guard.

#### CARRY COLOR – COLOR BEARERS

At Carry COLOR, the Services differ in the placement of the left hand and arm.

Navy, Marine Corps and Air Force - The left hand is returned to the side after grasping the staff to steady it while seating the ferrule in the socket of the sling.

Army - The left hand is positioned on the socket to secure the ferrule. See figure 9, below.





**Figure 9**

**Figure 9 shows the placement of the left hand at *Carry COLOR* as performed by Army JROTC units. Navy, Marine Corps and Air Force units require that the left hand be at the side.**

### **PRESENT COLORS – ORGANIZATIONAL COLOR BEARERS**

**The position of Present Colors is the same in all services with the exception of the left hand, which is at the same position as in Carry Color as described on page 16. (Navy, Marine Corps and Air Force at the side), (Army, positioned on the socket of the sling). Movements from *Order* and *Carry COLOR* to *Present COLOR* are different in that the left rifle bearers are on the opposite shoulder, (left) for the Navy and Marine Corps and (right) for the Army. In the Air Force, the Color Guards render the Hand Salute if armed with revolvers. Movement of Air force Rifle Bearers is not addressed in AFMAN 36-2203.**

### **MARCHING MOVEMENTS OF THE COLOR GUARD**

**Color Guards from all services march at the same interval and execute turns (facings) essentially the same. There are differences in the execution and the commands in marching to the rear and in the commands to execute turns.**

## **FACING MOVEMENTS OF THE COLOR GUARD**

Facing movements by the Color Guard are executed in the same manner in all services. The commands are different as stated below:

**Navy and Marine Corps** - the command to execute facing movements by the Color Guard is *Right (left) turn, MARCH*.

**Army** - the command to execute facing movements by the Color Guard is *Right (left) wheel, MARCH*.

**Air Force** - the Color Guard is given the command to HALT. The command to turn in the new direction is *Right (left) ABOUT*.

## **MOVEMENT OF THE COLOR GUARD TO THE REAR**

To face a Color Guard to the rear, all services execute a movement that results in the color bearers and the rifle bearers marching in the opposite direction while maintaining their same positions to the right or left. The commands to execute the maneuver are different.

**Navy and Marine Corps** – The command to face the Color Guard to the rear is, *Countermarch, MARCH*.

**Army** - The command to face the Color Guard to the rear is, *Colors Reverse, MARCH*.

The execution of the movement is significantly different in each of the services. The Navy and Marine Corps movements require the bearers to turn in arcs as they reverse, while the Army and Air Force movements are more “squared” as shown in the following figures. Both figures show only the movements for the four-person Color Guard.

**Air Force** – Air Force Color Guards do not execute movements to the rear or column movements. When the unit to which they are attached executes facing movements, the Color Guard halts and executes a right or left about by pivoting on the guard on the left or right until facing in the new direction of march.

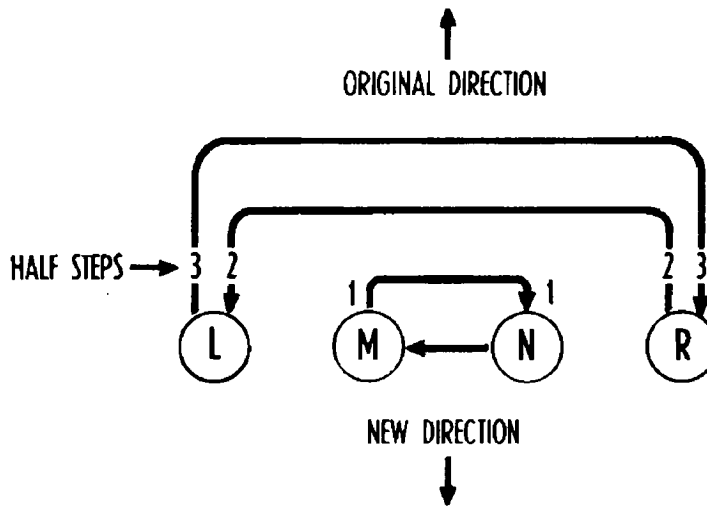


Figure 10

Figure 10 – Navy and Marine Corps “Counter-march.” At the command of execution, the entire Color Guard picks up the half-step. The National Color Bearer makes a small arc to his left, moving into the position previously occupied by the Organizational Color Bearer, facing in the new direction of march.

The Organizational Color Bearer makes an arc to his right, and outside the National Color Bearer, moving into the position previously occupied by the National Color Bearer, facing in the new direction of march.

The Right Rifle Bearer takes two half-steps forward, then moves in an arc to his left outside the Color Organization Bearer, moving into the position previously occupied by the Left Rifle Bearer, facing in the new direction of march.

The Left Rifle Bearer takes three half-steps forward, then moves in an arc to his right outside the Right Rifle Bearer, moving into the position previously occupied by the Right Rifle Bearer, facing in the new direction of march.

Upon completion of each individual’s movement, all members mark time until the Color Guard is halted or until it receives the next command.

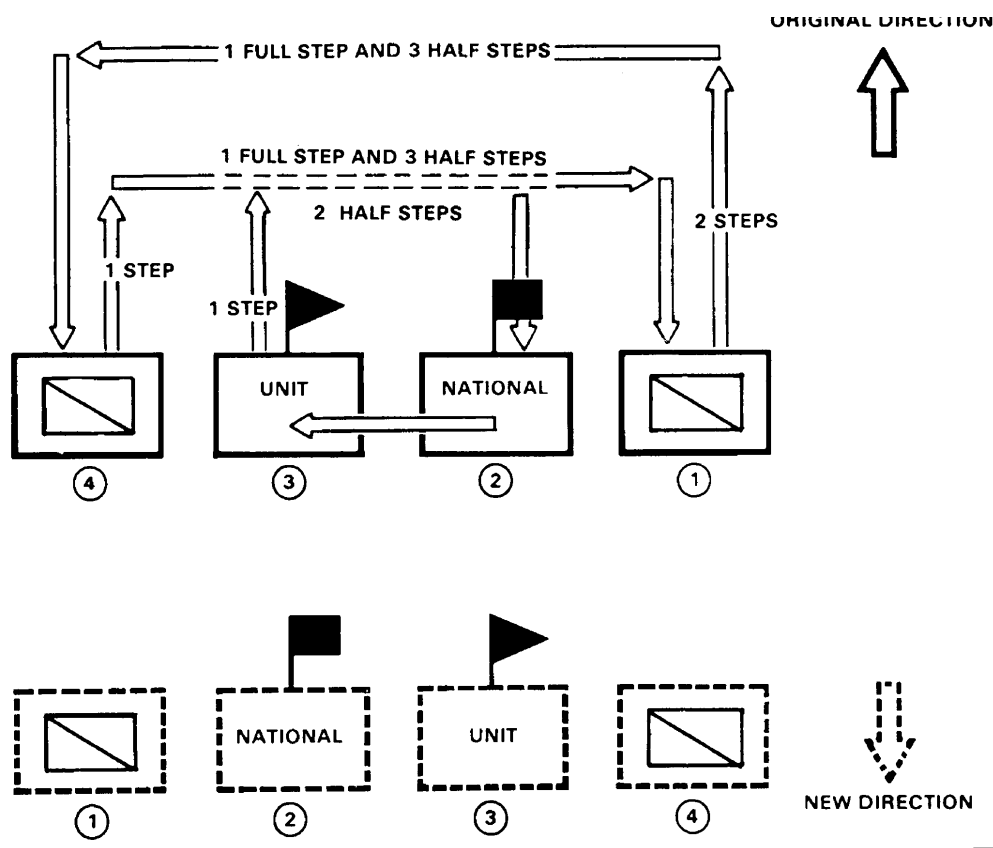


Figure 11

Figure 11 – Army “Colors Reverse.” At the command of execution each person simultaneously executes the following movements:

Number 1 takes two steps forward, faces to the left in marching, takes one full step and three half steps, faces to the left in marching, and takes two steps in the new direction.

Number 2 faces to the left in marching and faces to the left while marking time.

Number 3 takes one step forward, faces to the right in marching, takes two half steps, faces to the right in marching, and takes one step in the new direction.

Number 4 takes one step forward, faces to the right in marching, takes one full step and three half steps, faces to the right in marching, and takes one step forward in the new direction.

Numbers 2, 3, and 4 mark time after completing their movements until all men are abreast, then step off together or halt, as the situation dictates.

## **CASING AND UNCASING THE COLORS**

Army sponsored drill meets often call for the Color Guard to case and uncase the Colors as part of the graded competition. The following procedures are outlined in FM 22-5, Chapter 9-47.

The Color Guard is formed in line formation with the cased Colors at the carry position (order position when indoors). The command sergeant major (or his direct representative) positions himself/herself six steps in front of and centered on the formation. He/she then commands *Sling* ARMS. The Color guards immediately adjust their slings and assume *sling* ARMS. The command sergeant major commands POST. The Color guards face to the half left (right) in marching, take four steps, halt, and execute about face. The command sergeant major then directs UNCASE THE COLORS. The Color bearers lower the Colors (same as present guidon). The two guards move forward and untie and uncase the Colors. The Color bearers unfurl and immediately return the Colors to the carry (order) position. While the Colors are being unfurled, the guards fold the cases and secure them in their left hand. When the Colors are in the carry position, the command sergeant major commands *Present* ARMS. The command sergeant major, Color Guards and the organizational color salute. He/she commands *Order*, ARMS, and then commands, POST. On the command of execution POST, the Color guards place the folded canvas cases inside the cartridge belts (center rear) of the Color bearers. The Color guards assume their original positions, adjust their slings, and return to right shoulder arms. If the command sergeant major or his/her representative is not present, the senior Color sergeant gives the necessary commands.

To case the Colors, the procedures are basically the same except *Present* ARMS is given before the Colors are lowered.

When casing or uncasing the Colors with the command present, the commander directs UNCASE (CASE) THE COLORS. The command sergeant major and Color Guards execute the movement (previously stated) except that they execute present arms and order arms with the Color company. When the Colors are uncased and returned to the carry position, the commander directs BRING YOUR UNITS TO PRESENT ARMS. After the units have executed this directive, he/she then directs BRING YOUR UNITS TO ORDER ARMS.

If the Colors are to be cased or uncased during the receiving or dismissing by the Color company, the Color guards execute present arms and order arms on the command of the company commander.

The command sergeant major uncases the organizational color when it is displayed by itself. He may also assist the Color guards when uncasing more than two colors.

## **CHAPTER 5**

### **SABER/SWORD MANUAL**

The sword (saber) issued to JROTC units is different in size, type and nomenclature for the various parts. This section will refer to the differences in the actual movements and positions of the sword and the commands used to execute the movements. Air Force units do not utilize the sword.

#### **DRAW SWORD**

The command to *Draw* SWORD is the same in all services. The movement takes the sword from the scabbard and places it in the position of *Carry* SWORD. Carry Sword is the same position in all services. The method of bringing the sword from the scabbard to Carry is different. The preparatory commands (*Draw*) and the subsequent action is the same in all services, on the command of execution (SWORD), the movements differ in the following manner:

**Navy and Marine Corps** – As the sword is drawn from the scabbard, the right arm is raised to its full length directly in front of the cadet at an angle of 45 degrees with the sword in a straight line with the arm, the sharp edge down; at the same time, the left hand is lowered to the side. There is a pause for one count. The right hand is then lowered toward the right side while at the same time bringing the point of the sword blade toward the right shoulder which places the sword in the position of Carry Sword.

**Army** - On the command of execution the sword is drawn from the scabbard and brought directly to the position of Carry Sword.

#### **PRESENT SWORD**

The position of Present Sword is the same in all services. The movements from Carry Sword or Order Sword to Present Sword are different, as described below:

**Navy and Marine Corps** - On the preparatory command of *Present*, the right hand is raised to the level of and six inches in front of the neck. The thumb is on the left side of the sword grip, wrist straight and elbows against the body. The blade should tilt forward at 30 degrees. On the command of execution, SWORD, (ARMS), the

point of the sword is brought down smartly to a position three inches above the ground and slightly right of the right foot. The arm is straightened so that the guard is against the trouser seam. The blade is inclined down and to the front with the sharp edge to the left. The thumb remains on the left side of the grip. Figure 12 illustrates the position of Carry, figure 13 the movement on the preparatory command, *Present*, and figure 14 illustrates the final position of PRESENT.

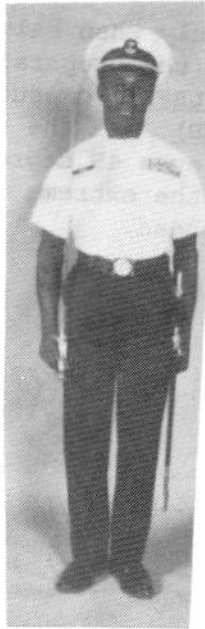


Figure 12



Figure 13

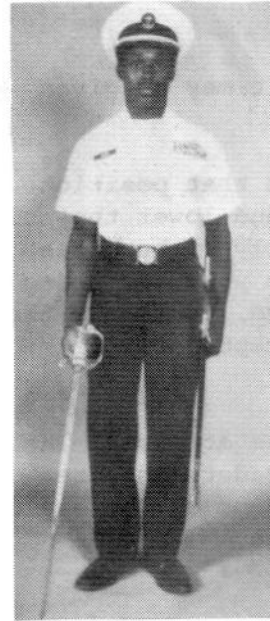


Figure 14

**Army** - On the preparatory command of *Present*, the sword is brought to a position (at the rate of two counts) approximately four inches from the nose so that the tip of the sword is six inches from the vertical. At the command of execution (ARMS), the right hand is lowered (at the rate of two counts) with the flat of the blade upward, the thumb extended on the left side of the grip and the tip of the sword about six inches from the marching surface. Figure 15 illustrates the position of CARRY, figure 16 illustrates the movement on the preparatory command, and figure 17 illustrates the final position of PRESENT.

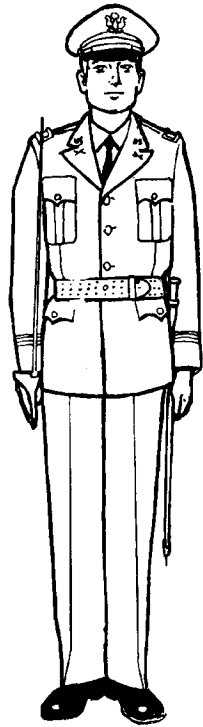


Figure 15

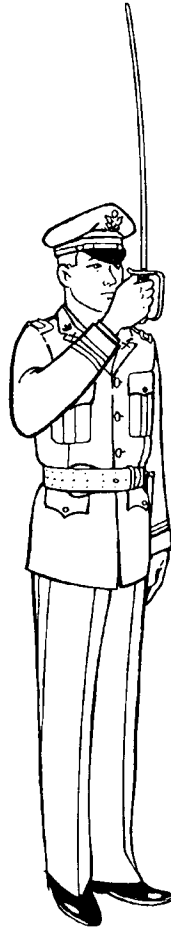


Figure 16

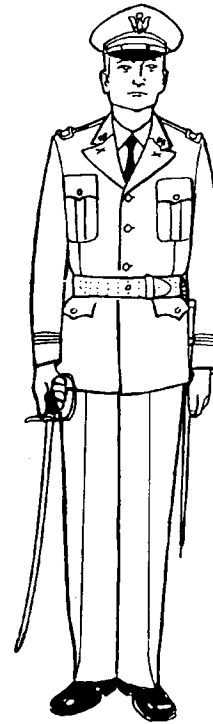


Figure 17

### RETURN SWORD

The movements to return the sword to the scabbard are similar, but slightly different in the various services. The command is the same in all services, but is only executed from *Carry SWORD* in the Army, and from *Carry* or *Order SWORD* in the Navy and Marine Corps. The differences are as follows:

Navy and Marine Corps – From *Order SWORD*, or *Carry SWORD*, the movement is begun on the preparatory command. On the Command, *Return*, the right hand is raised to a position 6 inches in front of the neck. At the same time, the scabbard is gripped with the left hand just above the upper ring mounting, tilted forward and turned clockwise 180 degrees. The tilt of the scabbard should form a 45-degree angle with the deck. Then lower the sword point to a position just above the opening of the scabbard. The cadet looks down at the opening and guides the point into the opening until the right forearm is parallel to the deck. Then the head is raised back to the position of attention and the left hand holds the scabbard against the side. On the command of execution, *SWORD*, the sword is pushed down



smartly and the grip released so that the sword slides all the way into the scabbard. In the same motion, the right hand is brought back to the right side, and the scabbard is turned 180 degrees and released.



Figure 18



Figure 19



Figure 20

Figures 18 and 19 illustrate the position of the sword at the preparatory command, *Return*. Figure 20 is the final position after the command, *SWORD*.

**Army** – From *Carry SWORD* only, the movement is begun on the preparatory command, *Return*. The sword is brought to a vertical position. The forearm (wrist) is held parallel to the marching surface about three inches from the body; the guard is pointed to the left. At the command of execution, *SWORD*, three actions take place simultaneously; the sword is pivoted downward toward the guard, at the same time the scabbard is grasped with the left hand just above the upper brass ring mounting. The scabbard is tilted forward and turned 180 degrees. The scabbard should form a 45 degree angle with the ground, and the cadet turns his head to the left and looks down to observe the mouthpiece of the scabbard (the shoulders remain squared to the front and level). As smoothly and quickly as possible, the sword is inserted into the scabbard and stopped so that about 12 inches of the blade is showing; the right forearm (wrist) is horizontal to the marching surface and three inches from the body. On the command of execution *CUT*, of the command *Ready, CUT*, the sword is thrust smartly into the scabbard, the scabbard is rotated so that its tip is forward, and the cadet comes to attention.

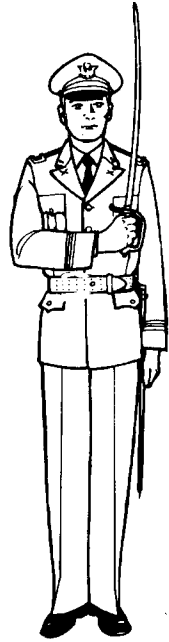


Figure 21

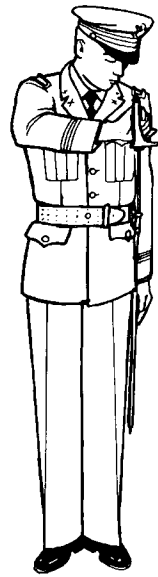


Figure 22

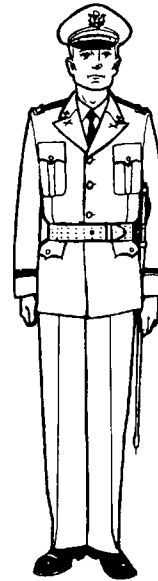


Figure 23

Figure 21 illustrates the movement of the sword on the preparatory command, *Return*. Figure 22 illustrates the position of the sword at the command of execution *CUT*, of the command *Ready, CUT*. Figure 23 illustrates the cadet at the position of *Attention* after the sword return.